



Salt Lake



14 Day Adelaide <> Darwin Safari

Highlights

Flinders Ranges
Wilpena Pound
Coober Pedy
Uluru (Ayers Rock)
Kata Tjuta (the Olgas)
Kings Canyon
Aboriginal Cultural Experience
Alice Springs
Devils Marbles
Mataranka Springs
Katherine Gorge
Litchfield National Park
Mary River Wetlands
Kakadu National Park

Optional Activities

(paid locally in AUD\$ from)

Camel Ride	\$5
Helicopter Flight	\$50-\$400
Kings Creek Station	
Harley Davidson Ride	\$90-\$345
(Uluru)	
Helicopter Flight (Uluru)	\$120-\$260
Katherine Gorge Canoe	\$35-\$45
Katherine Gorge Cruise	\$60
Helicopter Flight (Katherine Gorge)	\$75-\$350

SAVE!

SAVE UP TO AUD\$330
with this package



Day 1 : Adelaide to Quorn

We travel through the Clare arriving in Quorn in time for lunch. This afternoon we hike to the summit of Dutchman's Stern for stunning 360° views of Quorn, Spencer Gulf and the Flinders Ranges! Our home for the next two nights is private accommodation at the historical 'Mill'. Get ready for tonight's BBQ dinner – it doesn't get any more Aussie than this! (LD)

Day 2 : Flinders Ranges and Wilpena Pound

Wilpena Pound is a natural amphitheatre located in a huge stone crater and you will spend the morning hiking and exploring its wonder! After lunch, it's a short walk to Yourambulla Caves to view Aboriginal rock paintings then stop at the ruins of Kanyaka Homestead. Overnight at the Quorn 'Mill'. (BLD)

Day 3 : Quorn to Coober Pedy

We journey north through Port Augusta, Glendambo (population 30!) and visit ancient salt lakes which are the remnants of an inland sea. We show you around Coober Pedy on a town and mine tour... watch an opal cutting demonstration and try your luck 'noodling' for opals! Our bunkhouse for tonight is – you guessed it – underground. (BLD)

Day 4 : Coober Pedy to Uluru

Driving through the rugged desert country, we reach Yulara in time for sunset over Uluru (Ayers Rock). Tonight, lend a hand as we cook dinner at our permanent campsite then consider the option to sleep under the outback stars in a traditional 'Aussie swag'. (BLD)

Day 5 : Uluru to Kata Tjuta and Kings Canyon

Sunrise over Uluru is magical and it's an early start to catch it! While the morning's fresh (and your legs are too) take a walk around Uluru's base (unguided) followed by an interpretive walk led by your guide. After visiting Kata Tjuta (the Olgas) we head to Kings Canyon, where we camp for the night. (BLD)

Day 6 : Kings Canyon to Alice Springs

There's a lot to explore at Kings Canyon, including the Lost City, the lush and ancient Garden of Eden and the sheer outcrops of the North and South Walls. After lunch, relax and enjoy the harsh desert scenery as we travel to Alice Springs. (BL)

Days 7-8 : Alice Springs

Enjoy two FREE DAYS to explore Alice Springs. Accommodation included (meals at own expense).

Day 9 : Alice Springs to Tennant Creek

We pass by the Tropic of Capricorn then stop at the Barrow Creek Pub. Precariously balanced on their rocky perch are the Devils Marbles, a site sacred to its Traditional Owners. Last stop for today is our camp at an outback station and if the weather's good, you can take a dip in the waterhole. (LD)

Day 10 : Tennant Creek to Katherine Gorge

No visit to the Top End would be complete without a visit to the famed Daly Waters pub, a quintessential outback roadhouse and 'watering hole' for travellers

from far and wide. Mataranka lies in the heart of the 'never-never', and you'll get to soak in the steamy thermal springs. As the day draws to a close, we reach our overnight camp at stunning Katherine Gorge. (BLD)

Day 11 : Katherine Gorge to Darwin

The gorge is all yours this morning, with a half day to spend canoeing or cruising (seasonal) the spectacular waters – or maybe view it from above by helicopter (all activities at own expense). We'll head to Darwin after a stop at idyllic Edith Falls. (BL) Overnight accommodation included.

Day 12 : Darwin to Mary River

A refreshing start to your day checking out the waterfalls of Litchfield National Park. Travel west into Woolna Country and receive a Cul Cul or unique 'Welcome to Country' by the traditional owners of the land, the Limilngan – Wulna people. Experience the local Aboriginal culture including cooking bush tucker, playing the didgeridoo, basket weaving and spear throwing. To finish the day we head to the spectacular Mary River Wetlands. Keep a watch for lurking crocodiles on our private river cruise! A secluded campsite at Point Stuart Wilderness Lodge is where we'll stay tonight. (LD)

Day 13 : Mary River to Kakadu

Discover ancient Aboriginal rock art at Ubirr and clamber to the top of a rocky lookout for fabulous views over the Nardab floodplain. Next it's on to Maguk (Barramundi Gorge) where a hike is rewarded with a reviving swim in the plunge pools. Tonight we stay at our permanent camp within Kakadu National Park. (BLD)

Day 14 : Kakadu to Darwin

Get ready for some 4WD action today on our way to Jim Jim Falls! Once we get there, we'll hike to the base of the falls before continuing on to Twin Falls. Feel the beauty of the stunning gorge and powerful falls from the National Park operated boat and boardwalk experience. The impressive scenery will continue to amaze you as we journey back to Darwin in the afternoon. (BL)

Bring: Please refer previous tour.

Included: Experienced guides, meals as indicated, accommodation transfers, camping fees and equipment, Opal Mine tour, 7 nights dorm accommodation (or upgrade to ensuite), opal mine tour, South Australia park fees.

Note: Upgrade to 7 nights ensuite motel accommodation is available. Upgrade accommodation is budget style (except the Desert Cave which is 4 star) and may be located on different premises (not necessarily underground) to hostel accommodation. Package is made up of three individual tours; therefore you may travel with a different guide and passengers during each section. Tropical Summer Program applies December to May in Kakadu, please refer to page 15 for details.

14 DAYS FROM

(\$AUD)
\$1948

All prices include \$50 (year round) & \$13 (dry season) park fees paid locally

Package includes 6 nights camping & 7 nights dorm accom. with share facilities
Multi-share **\$1948**

Package incl. 6 nights camping, 6 nights budget ensuite accom. & 1 night Opal Inn Coober Pedy
Twin/Double **\$2273**
Triple **\$2158**
Single **\$2698**

Package incl. 6 nights camping, 6 nights budget ensuite accom. & 1 night Desert Cave Coober Pedy
Twin/Double **\$2328**
Triple **\$2208**
Single **\$2823**

For further details on upgrade accommodation, please refer adventuretours.com.au/upgrade

Departs

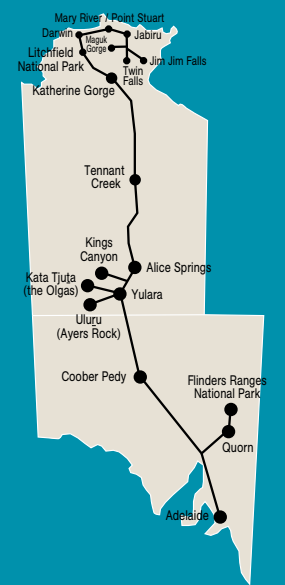
Adelaide accommodation 7.00am
.....Mon Wed Sat

Finishes

Darwin accommodation
early evening Day 14

Tour operates in reverse
Please refer to page 24

Max. People 24 / 16



Tour Code: PBTAN

Safaris must be reconfirmed by 4.00pm the day before travel. Itineraries may vary and/or attractions be substituted due to seasonal & extreme weather conditions, Traditional Owner and national park requirements. Luggage limit of 15 kg applies (10 kg on Kakadu Safaris) – in a backpack or soft bag. Please refer to our terms and conditions at the back of the brochure.



Terms and Conditions

Climate

Australia is a large country with weather conditions varying considerably from one region to another. You can expect high temperatures in the summer (Dec-Feb) but be prepared for lower temperatures at night and during the Australian winter (Jun-Aug), particularly in Southern Australia where conditions can change quickly. New Zealand's weather is sub-tropical to temperate but be prepared for lower temperatures during winter (Jun-Aug) and we recommend you bring a good wind and/or waterproof jacket year-round. Further weather information can be found at: www.bom.gov.au (AUS) www.metservice.co.nz (NZ).

Weather conditions in the Australian summer are very warm and hiking in these conditions requires an intake of 1.5 litres of water per hour. Our guides are trained professionals and it is very important that their advice is adhered to.

Average Temperatures and Rainfall Days*

Region	Location	Dec	Mar	Jun	Sep
NSW	Byron Bay	20°/26°/10	20°/27°/13	13°/20°/10	14°/22°/7
NSW	Sydney	18°/27°/7	18°/27°/8	9°/18°/7	12°/23°/6
NT	Alice Springs	20°/35°/4	18°/33°/2	5°/20°/2	10°/28°/1
NT	Darwin	26°/34°/12	25°/33°/14	20°/31°/0	23°/33°/12
NT	Jabiru	25°/35°/13	24°/34°/18	19°/32°/1	22°/36°/1
QLD	Cairns	23°/32°/9	23°/31°/15	17°/26°/7	18°/28°/5
SA	Adelaide	15°/27°/4	15°/26°/4	9°/16°/11	9°/18°/9
SA	Coober Pedy	19°/37°/2	18°/33°/1	7°/19°/2	10°/25°/2
SA	Kangaroo Is.	14°/22°/3	14°/22°/3	9°/15°/11	9°/17°/9
TAS	Hobart	11°/22°/5	10°/21°/4	4°/11°/5	6°/15°/6
TAS	Launceston	10°/21°/7	10°/21°/6	3°/12°/9	5°/14°/10
VIC	Melbourne	12°/24°/6	13°/24°/6	6°/14°/8	7°/17°/9
WA	Broome	26°/34°/4	25°/34°/5	15°/28°/1	18°/32°/1
WA	Kununurra	26°/38°/7	24°/35°/7	16°/31°/1	21°/36°/1
WA	Perth	16°/29°/2	16°/30°/3	9°/19°/13	10°/20°/11
NZ	Auckland	12°/24°/8	13°/20°/11	9°/15°/15	11°/18°/12

*Average Minimum Temperature Celsius / Average Maximum Temperature Celsius / Average Number of Days Rain for Month

How much luggage can I bring?

Our vehicles have limited space so please keep your luggage to a **MAXIMUM OF 15 KGS (except KAKADU tours which are MAXIMUM 10KGS & ROAD TRIPS which are a maximum of 20KGS)** in a backpack or soft overnight bag with a small day pack for easy access to camera, sun block etc. It is recommended to plan ahead and arrange to store bulky items at pre-tour accommodation. This is relevant also, when travelling on packages which include Kakadu, as all tours start from and return to Darwin. Any package touring totally within the Northern Territory which includes the Red Centre will start from and return to Alice Springs. It may be necessary to freight excess luggage at passenger's expense.

What do I eat?

Our emphasis is on fresh food wherever possible and our meals are nutritious and varied. If you are vegetarian or gluten intolerant we can cater for you, but if you have very specific dietary needs you may need to provide your own food. Please discuss this at time of booking. For breakfast we supply cereals, toast, tea and coffee. Lunch is usually a self-serve sandwich and salads; in the evening we have a cooked dinner. We always carry water in the vehicle and you will often have the chance to buy your own drinks, ice-creams etc at stops. Please refer to each individual tour/package to establish which meals are included. Meals are indicated as: B = Breakfast, L = Lunch and D = Dinner.

'Road Trips': A meal kitty of AUD/NZD\$10 per person per day is payable locally. The meal kitty is utilised at the discretion of the tour leader and passengers. Please refer to pages 67 & 91 for further information.

Where do I meet the tour?

Please ask your agent for your pick-up details at time of booking. Adventure Tours pick up from select accommodation (except Melbourne, Sydney and Cairns where tours depart from 3-4 central locations). Accommodation pick-up times will be earlier than published tour departure time.

'Road Trips': Depart from pre-departure hotels as indicated.

Do I need to reconfirm my tour?

YES! FAILURE TO DO SO MAY RESULT IN THE CANCELLATION OF YOUR BOOKING. You must call us on 1300 654 604 (within Australia) and 09 5262149 (within New Zealand) at least 48 hours before departure with the name of your accommodation and room number (except Road Trips, where reconfirmation is not required).

How fit do I have to be?

Our tours are active and require a reasonable level of fitness. Please refer to our fitness guide. If you enjoy hiking through gorges, swimming in waterfalls and directly experiencing the environment then our tours are perfect for you. If you have any doubts about your suitability for our tours, please check with our Reservations Department before making a booking. We reserve the right to assess your ability to participate at check-in.

NOTE: Tours graded '3 boots' on the Fitness Guide are only suitable for very fit and active people who enjoy basic bush camping. They are not suitable for children.

Do I have to participate?

Part of the enjoyment of our tours is bonding with a group of like-minded adventurers so we make them active and hands on. With the exception of our 'Safari in Style' tour, passengers are expected to help with the preparation of food, washing of dishes and general assistance to the guide as directed. 'Road Trips' use a rotating roster system, please refer to pages 67 & 91 for further information.

Cancellation policy

Cancellation of a booking or part thereof will incur the following fees. Once travel has commenced, no refunds will be made for any unused services and clients will be responsible for their travel arrangements from that point onward.

Other operator and accommodation cancellation fees may vary from the below and are available on request. Please note: Kangaroo Island airfare is non-refundable. It is necessary to reconfirm tours 48 hours prior to travel - failure to do so may result in the booking being cancelled and fees charged.

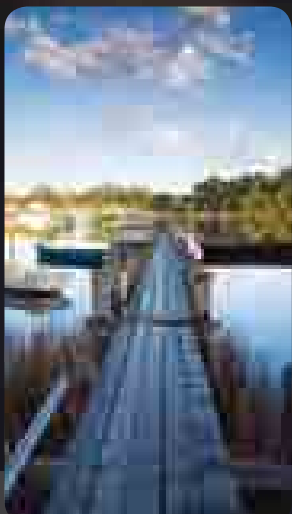
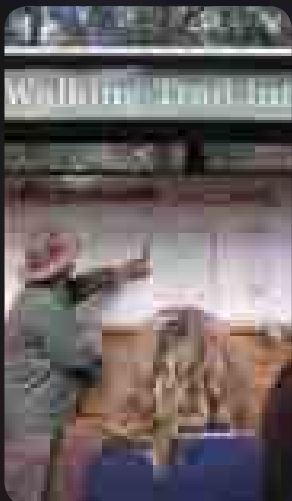
Adventure Tours Australia / New Zealand:

48 Hours - 30 Days 25% of Fare
24 Hours - 48 Hours 50% of Fare
Within 24 Hours 100% of Fare

'Road Trips'

30 Days - 8 Weeks 25% of Fare
14 Days - 29 Days 50% of Fare
Within 14 Days 100% of Fare

Cancellations should be made with your booking agent who may charge an additional fee.



Conditions of travel

Adventure Tours reserves the right to alter the route or itinerary of any of its tours and arrange alternative carriers to those advertised if necessary. No refunds will be given in these circumstances or in the event of any delay, curtailment or alteration of a trip resulting from any cause including severe weather conditions or mechanical failure. A minimum of four passengers is required to operate each tour (except Road Trips where the minimum number is five passengers). It may therefore be necessary to cancel a scheduled departure and to offer an alternative or full refund for that tour. Adventure Tours can't guarantee pick up or drop off times and are not liable for passenger failure to connect with other services or any costs associated in such delays. We accept no responsibility for loss or damage to personal belongings or baggage. The Aboriginal components of our Northern Australian tours are subject to cultural conditions. Participants may be absent due to Cultural commitments with little prior notification and Adventure Tours Australia reserves the right to amend the itinerary in these circumstances and no refunds will be given. Components of our tours are weather dependant and we cannot be held liable if they are not available on the day of travel.

Itinerary disclaimer

Our itineraries are correct at time of printing and may differ slightly to the one in the brochure. Occasionally our itineraries change as we make improvements based on comments from past travellers and our own research or there are changes in the offerings from operators we use. If we are unable to utilise a product, service or activity detailed in our itinerary, a suitable alternative will be offered where possible. Our brochure is printed in December for release in April, therefore if you have booked from a previous brochure there may have been changes to improve the itinerary.

Liability

Whilst we make every effort to safeguard our clients, we cannot be held responsible for personal injury or sickness to any customer or damage or loss of property due to events which are beyond our control. Passengers should note that adventure travel involves a higher than normal risk and a signed release will be required from all participants before tour departure. We also take no responsibility for any act of neglect by any operator whose services are used as part of your trip including, but not limited to activity and accommodation providers.

Child policy

- Children 7 years and under are not recommended to travel on any tour however requests may be considered;
- Children aged 8-12 years receive a discount on most tours, children 13 years or older pay full adult fare;
- Children 12 years and under:
 - Are not permitted to travel on Kimberley Safaris, Kakadu Unleashed or Wilderness 4WD Adventures (N/P = not permitted);
 - Are not recommended to travel on the 2 Day Red Centre Highlights, 2 Day 4WD Kakadu Safari or Western Australian touring other than the Pinnacles Day Tour. (N/S = not suitable). Requests however, may be considered;
- Children under 14 years are not permitted to travel on day tours ex Melbourne (N/P);
- Travellers under 18 years of age are not permitted to travel unless accompanied by an adult. In agreed circumstances written parental consent may suffice if arranged at time of booking;
- 'Road Trips' are designed for travellers 18 years plus;
- Child prices for accommodated tours are based on one child sharing an ensuite room with two adults. If one child travels with one adult the adult rate for accommodation applies and will be provided upon request;

- Requests for child travel and pricing should be directed to reservations@adventuretours.com.au;
- The policies for children travelling on code-share tours may vary from the above and are available on request.

Insurance

Travel insurance is NOT included, we strongly recommend that passengers have their own travel insurance against illness, injury, loss/damage to personal belongings and not being able to travel on the confirmed departure date.

Fees and levies (subject to change) per person

- : Uluru – Kata Tjuta National Park: AUD\$25
- : Kakadu National Park: AUD\$25
- : Boat transfer to Twin Falls (Kakadu National Park): AUD\$12.50
- : Tasmanian National Parks: AUD\$12 per entry
- : Fraser Island: AUD\$18
- : Whitsunday sailing: AUD\$50 (includes Environment Management Charge, national park walks fee and wetsuit hire)
- : Credit card payments will attract a 1.5 – 3% surcharge
- : Fuel levy: We reserve the right to impose a fuel surcharge should fuel prices escalate post brochure release. This will be at a maximum of \$20 per person per tour and payable on day of travel.

Doubtful Sound (Adventure Tours New Zealand)

This overnight cruise operates through the months September to April inclusive. Outside these months this trip is substituted with an overnight cruise on Milford Sound. If for any reason the Doubtful Sound trip is not available through circumstances beyond our control you will be advised at the time of booking and offered either a Doubtful sound day trip or Milford Sound overnight trip as an alternative.

Smoking & drinking

Australian Government regulations prohibit smoking and the drinking of alcohol inside tourist vehicles in Australia (smoking and drinking should be limited to stops along the route).

Behaviour

Adventure Tours is not a common carrier and therefore can refuse to carry a person whose behaviour is detrimental to the enjoyment of the group. By travelling with Adventure Tours, you agree to accept the authority of the guide and accept their decisions. Our staff are entitled to a safe working environment and our passengers to a great holiday. Any threats to safety, being physical or verbal, or inappropriate behaviour may result in removal from the trip. If a guide requires a passenger to leave the trip no refunds will be given and that passenger will be responsible for their own travel costs from that point.

Prices

Australian tour prices are quoted in Australian Dollars and are correct at time of publication. New Zealand tours are quoted in Australian Dollars, based on an exchange rate determined at time of printing. We reserve the right to amend prices if currency fluctuations occur. Prices can be subject to alteration due to extreme external economic pressure. No responsibility is accepted by the Adventure Tours Australia Group for unforeseen omissions or misrepresentation of our code-share partners.

Brochure validity

This brochure is valid for travel from 1st April 2010 to 31st March 2011.

100% Recyclable

Do the right thing. When you finish with this brochure, don't throw it out, put it back in a brochure rack or pass it on to someone else who may be interested.

Western Australia Omnibus License Numbers: 292, 3889, 2654, 703.



FOR BOOKINGS CONTACT:

www.travelforever.com.au

Phone 08 6267 0700 Fax 08 6267 0701

135 Barrack Street Perth WA 6000

info@travelforever.com.au

Tours : Adventures : Internet Information : Australiawide



Lic No 9TA1290