



Penguin Parade



Twelve Apostles © Tourism Australia

## 1 Day Penguin Parade & Koala Highlights

### Highlights

- Wildlife up close
- Sunset at Penguin Parade
- Coastal Walks
- Swim at a Surf Beach
- Penguin Parade
- Visitor Centre

Meet some furry Australian creatures up close at a fantastic wildlife park. Phillip Island is just over the bridge and the island is known for its natural beauty, sandy beaches, rugged cliffs and unique wildlife experience. When the surf's up at Woolamai Beach it's really pumping; jump in for a swim or a take a walk along the coast. Stroll along the Nobbies boardwalk, which is home to a colony of fur seals. After a pizza dinner at Cowes, we head to the penguin parade. As the day fades, you'll witness the littlest penguins in the world emerge from the ocean and waddle onto the shore – it's a truly magical experience! (LD)

**Bring:** Sturdy walking shoes, hat and sunscreen, bathers/towel, water bottle, warm clothing and camera.

**Included:** Experienced guide, afternoon tea, lunch, pizza dinner, national park entry fees, entry to Wildlife Park and Penguin Parade, accommodation transfers.

**Note:** \*Pick up / drop off available from select Melbourne accommodation. Tour is operated as a code-share with Autopia Tours and not suitable for children under 14 years. Hand luggage only is permitted on day tours.

1 DAY

(\$AUD) **\$130**

### Departs

Melbourne accommodation\*  
11.45am Daily

### Finishes

Melbourne accommodation\*  
10.00pm - midnight (seasonal)

**Max. People** 22



Tour Code: AT1

## 1 Day Great Ocean Road Experience

### Highlights

- Great Ocean Road
- Wildlife
- Shipwreck Coast
- Bells Beach
- Twelve Apostles
- London Bridge

We pass through coastal town Torquay, before stopping for morning tea at Bells Beach, famous for its impressive surf. As we twist and wind our way along the spectacular Great Ocean Road, you'll enjoy loads of great coastal photo opportunities. We'll even stop to spot koalas! We reach the seaside town of Apollo Bay and there's time for a swim in the magnificent Southern Ocean. After lunch, stretch your legs in the Otway National Park and be amazed at the Twelve Apostles. There's many tragic tales of shipwrecks at Loch Ard Gorge, see the now collapsed London Bridge and the quaint fishing village of Port Campbell. We stop for dinner (own expense) on our return journey to Melbourne. (L)

**Bring:** Sturdy walking shoes, hat and sunscreen, bathers/towel, water bottle, warm clothing and camera.

**Included:** Experienced tour guide, morning tea and accommodation transfers.

**Note:** \*Pick up / drop off available from select Melbourne accommodation. Tour is operated as a code-share with Autopia Tours and not suitable for children under 14 years. Hand luggage only is permitted on day tours.

1 DAY

(\$AUD) **\$125**

### Departs

Melbourne accommodation\*  
8.15am Daily

### Finishes

Melbourne accommodation\*  
9.15pm

**Max. People** 22



Tour Code: AT3

## 1 Day Grampians Great Escape

### Highlights

- Grampians National Park
- Aboriginal Cultural Experience
- Wildlife
- Jaws of Death
- MacKenzie Falls

The Grampians; one of the world's oldest and most spectacular mountain ranges, rich in the history and culture of the Gariwerd Aboriginal people. We travel to Halls Gap for lunch (own expense) then explore the Wonderland Range. Learn about Indigenous history and culture at the Brambuk Aboriginal Cultural Centre. Hike to the remarkable Jaws of Death and Balconies Lookout and cool off at the base of inspirational MacKenzie Falls. We stop for dinner (own expense) on our return journey to Melbourne.

**Bring:** Sturdy walking shoes, hat and sunscreen, bathers/towel, water bottle, warm clothing, camera, money for lunch and dinner.

**Included:** Experienced guide, national park fees, morning tea, accommodation transfers.

**Note:** \*Pick up / drop off available from select Melbourne accommodation. Tour is operated as a code-share with Autopia Tours and not suitable for children under 14 years. Hand luggage only is permitted on day tours.



1 DAY

(\$AUD) **\$120**

### Departs

Melbourne accom.\* 8.15am  
.....Mon Wed Sat

### Finishes

Melbourne accom.\* 9.30pm

**Max. People** 22



Tour Code: AT4





## Terms and Conditions

### Climate

Australia is a large country with weather conditions varying considerably from one region to another. You can expect high temperatures in the summer (Dec-Feb) but be prepared for lower temperatures at night and during the Australian winter (Jun-Aug), particularly in Southern Australia where conditions can change quickly. New Zealand's weather is sub-tropical to temperate but be prepared for lower temperatures during winter (Jun-Aug) and we recommend you bring a good wind and/or waterproof jacket year-round. Further weather information can be found at: [www.bom.gov.au](http://www.bom.gov.au) (AUS) [www.metservice.co.nz](http://www.metservice.co.nz) (NZ).

Weather conditions in the Australian summer are very warm and hiking in these conditions requires an intake of 1.5 litres of water per hour. Our guides are trained professionals and it is very important that their advice is adhered to.

### Average Temperatures and Rainfall Days\*

Region	Location	Dec	Mar	Jun	Sep
NSW	Byron Bay	20°/26°/10	20°/27°/13	13°/20°/10	14°/22°/7
NSW	Sydney	18°/27°/7	18°/27°/8	9°/18°/7	12°/23°/6
NT	Alice Springs	20°/35°/4	18°/33°/2	5°/20°/2	10°/28°/1
NT	Darwin	26°/34°/12	25°/33°/14	20°/31°/0	23°/33°/12
NT	Jabiru	25°/35°/13	24°/34°/18	19°/32°/1	22°/36°/1
QLD	Cairns	23°/32°/9	23°/31°/15	17°/26°/7	18°/28°/5
SA	Adelaide	15°/27°/4	15°/26°/4	9°/16°/11	9°/18°/9
SA	Coober Pedy	19°/37°/2	18°/33°/1	7°/19°/2	10°/25°/2
SA	Kangaroo Is.	14°/22°/3	14°/22°/3	9°/15°/11	9°/17°/9
TAS	Hobart	11°/22°/5	10°/21°/4	4°/11°/5	6°/15°/6
TAS	Launceston	10°/21°/7	10°/21°/6	3°/12°/9	5°/14°/10
VIC	Melbourne	12°/24°/6	13°/24°/6	6°/14°/8	7°/17°/9
WA	Broome	26°/34°/4	25°/34°/5	15°/28°/1	18°/32°/1
WA	Kununurra	26°/38°/7	24°/35°/7	16°/31°/1	21°/36°/1
WA	Perth	16°/29°/2	16°/30°/3	9°/19°/13	10°/20°/11
NZ	Auckland	12°/24°/8	13°/20°/11	9°/15°/15	11°/18°/12

\*Average Minimum Temperature Celsius / Average Maximum Temperature Celsius / Average Number of Days Rain for Month

### How much luggage can I bring?

Our vehicles have limited space so please keep your luggage to a **MAXIMUM OF 15 KGS (except KAKADU tours which are MAXIMUM 10KGS & ROAD TRIPS which are a maximum of 20KGS)** in a backpack or soft overnight bag with a small day pack for easy access to camera, sun block etc. It is recommended to plan ahead and arrange to store bulky items at pre-tour accommodation. This is relevant also, when travelling on packages which include Kakadu, as all tours start from and return to Darwin. Any package touring totally within the Northern Territory which includes the Red Centre will start from and return to Alice Springs. It may be necessary to freight excess luggage at passenger's expense.

### What do I eat?

Our emphasis is on fresh food wherever possible and our meals are nutritious and varied. If you are vegetarian or gluten intolerant we can cater for you, but if you have very specific dietary needs you may need to provide your own food. Please discuss this at time of booking. For breakfast we supply cereals, toast, tea and coffee. Lunch is usually a self-serve sandwich and salads; in the evening we have a cooked dinner. We always carry water in the vehicle and you will often have the chance to buy your own drinks, ice-creams etc at stops. Please refer to each individual tour/package to establish which meals are included. Meals are indicated as: B = Breakfast, L = Lunch and D = Dinner.

**'Road Trips':** A meal kitty of AUD/NZD\$10 per person per day is payable locally. The meal kitty is utilised at the discretion of the tour leader and passengers. Please refer to pages 67 & 91 for further information.

### Where do I meet the tour?

Please ask your agent for your pick-up details at time of booking. Adventure Tours pick up from select accommodation (except Melbourne, Sydney and Cairns where tours depart from 3-4 central locations). Accommodation pick-up times will be earlier than published tour departure time.

**'Road Trips':** Depart from pre-departure hotels as indicated.

### Do I need to reconfirm my tour?

**YES! FAILURE TO DO SO MAY RESULT IN THE CANCELLATION OF YOUR BOOKING.** You must call us on 1300 654 604 (within Australia) and 09 5262149 (within New Zealand) at least 48 hours before departure with the name of your accommodation and room number (except Road Trips, where reconfirmation is not required).

### How fit do I have to be?

Our tours are active and require a reasonable level of fitness. Please refer to our fitness guide. If you enjoy hiking through gorges, swimming in waterfalls and directly experiencing the environment then our tours are perfect for you. If you have any doubts about your suitability for our tours, please check with our Reservations Department before making a booking. We reserve the right to assess your ability to participate at check-in.

**NOTE:** Tours graded '3 boots' on the Fitness Guide are only suitable for very fit and active people who enjoy basic bush camping. They are not suitable for children.

### Do I have to participate?

Part of the enjoyment of our tours is bonding with a group of like-minded adventurers so we make them active and hands on. With the exception of our 'Safari in Style' tour, passengers are expected to help with the preparation of food, washing of dishes and general assistance to the guide as directed. 'Road Trips' use a rotating roster system, please refer to pages 67 & 91 for further information.

### Cancellation policy

Cancellation of a booking or part thereof will incur the following fees. Once travel has commenced, no refunds will be made for any unused services and clients will be responsible for their travel arrangements from that point onward.

Other operator and accommodation cancellation fees may vary from the below and are available on request. Please note: Kangaroo Island airfare is non-refundable. It is necessary to reconfirm tours 48 hours prior to travel - failure to do so may result in the booking being cancelled and fees charged.

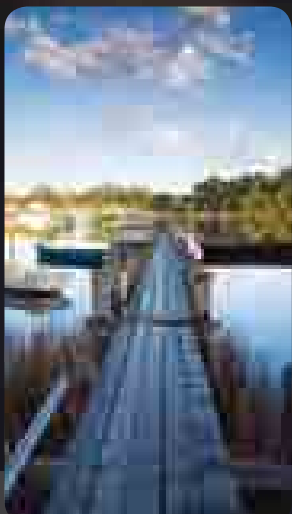
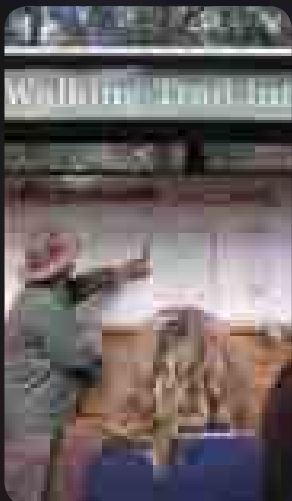
### Adventure Tours Australia / New Zealand:

48 Hours - 30 Days 25% of Fare  
24 Hours - 48 Hours 50% of Fare  
Within 24 Hours 100% of Fare

### 'Road Trips'

30 Days - 8 Weeks 25% of Fare  
14 Days - 29 Days 50% of Fare  
Within 14 Days 100% of Fare

Cancellations should be made with your booking agent who may charge an additional fee.



### Conditions of travel

Adventure Tours reserves the right to alter the route or itinerary of any of its tours and arrange alternative carriers to those advertised if necessary. No refunds will be given in these circumstances or in the event of any delay, curtailment or alteration of a trip resulting from any cause including severe weather conditions or mechanical failure. A minimum of four passengers is required to operate each tour (except Road Trips where the minimum number is five passengers). It may therefore be necessary to cancel a scheduled departure and to offer an alternative or full refund for that tour. Adventure Tours can't guarantee pick up or drop off times and are not liable for passenger failure to connect with other services or any costs associated in such delays. We accept no responsibility for loss or damage to personal belongings or baggage. The Aboriginal components of our Northern Australian tours are subject to cultural conditions. Participants may be absent due to Cultural commitments with little prior notification and Adventure Tours Australia reserves the right to amend the itinerary in these circumstances and no refunds will be given. Components of our tours are weather dependant and we cannot be held liable if they are not available on the day of travel.

### Itinerary disclaimer

Our itineraries are correct at time of printing and may differ slightly to the one in the brochure. Occasionally our itineraries change as we make improvements based on comments from past travellers and our own research or there are changes in the offerings from operators we use. If we are unable to utilise a product, service or activity detailed in our itinerary, a suitable alternative will be offered where possible. Our brochure is printed in December for release in April, therefore if you have booked from a previous brochure there may have been changes to improve the itinerary.

### Liability

Whilst we make every effort to safeguard our clients, we cannot be held responsible for personal injury or sickness to any customer or damage or loss of property due to events which are beyond our control. Passengers should note that adventure travel involves a higher than normal risk and a signed release will be required from all participants before tour departure. We also take no responsibility for any act of neglect by any operator whose services are used as part of your trip including, but not limited to activity and accommodation providers.

### Child policy

- Children 7 years and under are not recommended to travel on any tour however requests may be considered;
- Children aged 8-12 years receive a discount on most tours, children 13 years or older pay full adult fare;
- Children 12 years and under:
  - Are not permitted to travel on Kimberley Safaris, Kakadu Unleashed or Wilderness 4WD Adventures (N/P = not permitted);
  - Are not recommended to travel on the 2 Day Red Centre Highlights, 2 Day 4WD Kakadu Safari or Western Australian touring other than the Pinnacles Day Tour. (N/S = not suitable).
  - Requests however, may be considered;
- Children under 14 years are not permitted to travel on day tours ex Melbourne (N/P);
- Travellers under 18 years of age are not permitted to travel unless accompanied by an adult. In agreed circumstances written parental consent may suffice if arranged at time of booking;
- 'Road Trips' are designed for travellers 18 years plus;
- Child prices for accommodated tours are based on one child sharing an ensuite room with two adults. If one child travels with one adult the adult rate for accommodation applies and will be provided upon request;

- Requests for child travel and pricing should be directed to [reservations@adventuretours.com.au](mailto:reservations@adventuretours.com.au);
- The policies for children travelling on code-share tours may vary from the above and are available on request.

### Insurance

Travel insurance is NOT included, we strongly recommend that passengers have their own travel insurance against illness, injury, loss/damage to personal belongings and not being able to travel on the confirmed departure date.

### Fees and levies (subject to change) per person

- : Uluru – Kata Tjuta National Park: AUD\$25
- : Kakadu National Park: AUD\$25
- : Boat transfer to Twin Falls (Kakadu National Park): AUD\$12.50
- : Tasmanian National Parks: AUD\$12 per entry
- : Fraser Island: AUD\$18
- : Whitsunday sailing: AUD\$50 (includes Environment Management Charge, national park walks fee and wetsuit hire)
- : Credit card payments will attract a 1.5 – 3% surcharge
- : Fuel levy: We reserve the right to impose a fuel surcharge should fuel prices escalate post brochure release. This will be at a maximum of \$20 per person per tour and payable on day of travel.

### Doubtful Sound (Adventure Tours New Zealand)

This overnight cruise operates through the months September to April inclusive. Outside these months this trip is substituted with an overnight cruise on Milford Sound. If for any reason the Doubtful Sound trip is not available through circumstances beyond our control you will be advised at the time of booking and offered either a Doubtful sound day trip or Milford Sound overnight trip as an alternative.

### Smoking & drinking

Australian Government regulations prohibit smoking and the drinking of alcohol inside tourist vehicles in Australia (smoking and drinking should be limited to stops along the route).

### Behaviour

Adventure Tours is not a common carrier and therefore can refuse to carry a person whose behaviour is detrimental to the enjoyment of the group. By travelling with Adventure Tours, you agree to accept the authority of the guide and accept their decisions. Our staff are entitled to a safe working environment and our passengers to a great holiday. Any threats to safety, being physical or verbal, or inappropriate behaviour may result in removal from the trip. If a guide requires a passenger to leave the trip no refunds will be given and that passenger will be responsible for their own travel costs from that point.

### Prices

Australian tour prices are quoted in Australian Dollars and are correct at time of publication. New Zealand tours are quoted in Australian Dollars, based on an exchange rate determined at time of printing We reserve the right to amend prices if currency fluctuations occur. Prices can be subject to alteration due to extreme external economic pressure. No responsibility is accepted by the Adventure Tours Australia Group for unforeseen omissions or misrepresentation of our code-share partners.

### Brochure validity

This brochure is valid for travel from 1st April 2010 to 31st March 2011.

### 100% Recyclable

Do the right thing. When you finish with this brochure, don't throw it out, put it back in a brochure rack or pass it on to someone else who may be interested.

Western Australia Omnibus License Numbers: 292, 3889, 2654, 703.



**FOR BOOKINGS CONTACT:**

**[www.travelforever.com.au](http://www.travelforever.com.au)**

Phone 08 6267 0700 Fax 08 6267 0701

135 Barrack Street Perth WA 6000

**[info@travelforever.com.au](mailto:info@travelforever.com.au)**

**Tours : Adventures : Internet Information : Australiawide**



Lic No 9TA1290